



# Honeyguide

**WILDLIFE HOLIDAYS**

36 Thunder Lane, Thorpe St Andrew, Norwich NR7 0PX

Telephone: 01603 300552

www.honeyguide.co.uk E-mail: [chris@honeyguide.co.uk](mailto:chris@honeyguide.co.uk)



## **French Pyrenees 14 – 21 June 2026**

## Holiday participants

Jill Jordan  
Denise Back  
Anne McGregor  
Everard Daniel  
Ann Greenizan  
Julian Lawrence and Nicola Sutton

Dawn Stevens  
Megan McLean  
Steve and Kathy Kourik  
Daphne Seaton & Fiona Jolliffe  
Val Pearce

## Leaders

Chris Durdin and Ivan Nethercoat

Our hosts in the French Pyrenees: Odile and Philippe Pujo, Hotel La Brèche de Roland  
[www.pyrenees-hotel-breche.com](http://www.pyrenees-hotel-breche.com)

Report by Ivan Nethercoat with additions by Chris Durdin.  
Bird list by Ivan, others by Chris.

Photos credits as noted by initials e.g. Everard Daniel (ED), Ivan Nethercoat (IN), all taken on the holiday. Cover: the group at Gavarnie (IN); black-veined white (ED).



The group at Troumouse.

This holiday, as for every Honeyguide holiday, also puts something into conservation in our host country by way of a contribution to the wildlife that we enjoyed. The conservation contribution this year was made up of £40 per person, an additional donation of £200 and supplemented by gift aid through the Honeyguide Wildlife Charitable Trust. It went to La Ligue pour la Protection des Oiseaux (LPO, the French bird protection league, the BirdLife partner in France) for their work in this region, for example bearded vulture protection. Guy Maille, President of LPO Hautes Pyrenees, came to see us – see diary for 16 June. We were able to send £940 (about €1062) to LPO. The total for all conservation contributions through Honeyguide since 1991 (July 2026) is £168,827.

## Daily diary

### 14 June – travel to Gèdre

After collecting minibuses at the airport at Lourdes, we set off on the drive to the hotel, soon learning the quirks of van air conditioning as we drove in 32-degree heat to Gèdre. A quick stop en route at what can be a productive roadside verge for low altitude Pyrenean saxifrage proved less fruitful this year, though small scabious and other flowers added interest.

At the Hotel La Brèche de Roland a simple but welcome lunch was ready for us. With check-in over, we took a stroll into the village to see the local nature and orient ourselves. That included seeing the two rivers that form such a major part of the village and going to 'Dipper Bridge'. There were no dippers this afternoon, but a short-toed eagle hinted this wasn't the UK. We stopped at Bar La Grotte in the village for beer and river flora from the terrace, a great end to a hot afternoon. A ramonda through the telescope on a damp wall may have seemed like an odd way to observe wild flowers, but sensible as it turned out: a dry period meant they had dried up in other places where they usually occur. We returned to the hotel with time to rest and unpack before the first of many excellent meals.



The Brèche de Roland, from the Hotel La Brèche de Roland (ED). The Brèche is the notch on the left of this part of the Cirque de Gavarnie

### 15 June– Lac des Gloriettes

Despite a weather forecast to the contrary, hot sun and clear skies stayed with us as we drove the short distance to the Lac des Gloriettes. We set off on the circuit of the lake, a man-made reservoir to supply the water for the hydro scheme in Gèdre. It's held back by an impressive dam across the valley that also provides easy, level access to the other side of the valley and a very pleasant walk, if slightly 'rugged' in places. Just getting across the dam takes time on a Honeyguide trip. While the water held no birds, on the dam wall many house martins were nesting, and black redstarts flitted on the slopes below. A movement in the rocks and there was our first marmot, nicely viewed from above as it scuttled among the vegetation. On the grassy slopes above the reservoir flocks of red-billed choughs were mingling in the air and feeding in the short grass, occasionally joined by their alpine relatives.

The walk was challenging at times for some as we delicately made our way across boulders, but the rewards were many. There were fragrant orchids and flowering butterworts, fritillaries, small blues and clouded yellow butterflies on the first stretch, then wheatears, saxifrage, short-toed eagle and griffon vultures. We crossed the river for the return leg and found cat's-foot, black vanilla orchids, red-backed shrike and a nice male ring ouzel to add to the tally, though not all of these for everyone as by now the group had split into smaller parties. At the very end, as we descended to the car park, a



Black vanilla orchid (CD)

group of black-veined white butterflies taking minerals from a wet part of our path was a nice end to a great walk in amazing scenery.

The car park wasn't the right place for picnics, so we drove down the hill and a short distance towards Troumouse, where we found a shady roadside overlooking the River Héas. As we sat on a rock overlooking a small pool in the river, a young grass snake weaved its way across algae and onto a log before disappearing among vegetation. What may have been another grass snake – there was some debate, as it could have the same snake – appeared and swam into cover. A beautiful demoiselle drifted by and there a confiding black-veined white nectared on some magnificent brook thistles. The many hogweeds here (and elsewhere) were too big for 'ordinary' hogweeds but too small for giant hogweed: the checklist reminded us that they were the Pyrenean subspecies *Heracleum sphondylium* ssp. *pyrenaicum*.

After a warm day out it was time for refreshment, so we drove to Gavarnie and a café. Madame collected us all around one table and made sure to take a group photo from both ends.

### 16 June – Col du Tourmalet

Our most reliable forecast seems to be 'looking out of the window' and today looked great. There was a 7:30 rendezvous for a few early risers to find some dippers, which we did, along the river a few minutes from the hotel. On the way back there was a bonus bird in the form of an Iberian woodpecker, which called and flew across the road as we approached the hotel for breakfast. We heard the woodpecker around or from the hotel all week, with the Merlin app and distribution maps confirming that this species is in the French Pyrenees.

After breakfast we were up and out for our usual departure time at 09:15 to head for Col du Tourmalet, well known by some as one of the highest passes on the Tour de France. Our route took us back down the valley to Luz St Sauveur and then via Barèges to start the long climb to 2115m.

The long climb to the top is made 'interesting' by numerous cyclists attempting to emulate their Tour heroes and today also by areas where the road was being resurfaced, presumably in preparation for the great race in a few weeks' time. But the long drag is an amazing provider of high mountain scenery and we eventually pulled into the car park at the top. From the edge of the parking area we scanned the grassland below and at a distance saw our first snowfinch. Seemingly untroubled by people, it kept flying up and across the meadow and back to a pylon showing extensive white on the wings – a quite stunning sight, especially against the light. White wagtail, wheatear and black redstart were also feeding on the ground, a high griffon patrolled the skies and a kestrel hunted over the edge of the ridge.



View at Tourmalet and snowfinch (IN).

As we walked to a small café overlooking the valley on the other side, a bearded vulture appeared over the ridge and descended to fly low over the café, soon joined by another. More griffon vultures appeared too and soon there was a column of 40+ birds. The café said it was normally closed at this time but as they were expecting a group they were happy to provide coffees – and a good place to scan the hills. The walk was short but productive with alpine and red-billed choughs, kestrel, water pipit, wheatear,

black redstart and more. Snowfinches were very confiding here, moving from ski metalwork to the ground and, for Megan, one of the last to leave, walking by her feet. The mountain pastures had alpine birdsfoot trefoil, clumps of pink rock-jasmine and the occasional whistles of marmots.

We took a short walk past gathering cyclists, motor bikes and motorhomes to see the statue of the cyclist<sup>1</sup> and to look down the route we had taken to the top, then we set off down again. The Glère Valley, a left turn from the road to Barèges, was only a short distance away, yet it felt a very different place, with open grassland in between pine and beech woodland with grazing horses and cattle that provide a rich area for wildlife.

Firstly, though, we had our picnic lunches. Chaffinch and chiffchaff gave a familiar backdrop, less so the buzzard circling overhead with a snake in its talons. After lunch, some went their own way and others potted with Chris and me in the rougher and sometimes wet areas of pasture that led, rather like a golf fairway, into the valley. In the wetter areas of grassland there were the tiny but distinctive leaves of round-leaved sundews plus Tofield's asphodels and scores of heath spotted orchids. Keeled skimmers posed for pictures and broad-bodied chasers skimmed over wetter areas. We slowly climbed to a flat area looking down the valley, where a memorial and information board revealed that there was a WW2 airstrip here used by the French resistance. On one side there were nice views down to a river, where a dipper came to say hello to Julian and as he watched an unidentified marten disappeared into rocks on the water's edge.



The Glère Valley, where it flattens and there was a WW2 airstrip; crag martin on a building here (IN).

It was hot, so we strolled back for refreshments at the café, Chez Louissette, where maiden pink was flowering, before a pleasant but quiet walk along rides through mature beech woodland.

We had a dinner and after-dinner guest this evening: Guy Maille, President of LPO Hautes Pyrenees. Chris was in contact with Guy about Honeyguide's donation, and had learnt that he speaks no English. We soon realised that Guy was quite a personality and not to be put off by such a minor matter. He travelled to Gèdre from Toulouse to see us, after which he was going home in the next valley but one, something like three hours away, then heading off to a meeting in Marseille in the morning. Over dinner, those who spoke some French also practised with a Google translate app, which proved astonishingly effective as we gathered in the hotel's meeting room (with no competing football, thank goodness) to hear about LPO's work. I think we were all impressed by Guy's energy and enthusiasm for LPO's nature conservation work.



Guy Maille from LPO and Honeyguide's Chris Durdin

<sup>1</sup> [https://en.wikipedia.org/wiki/The\\_Giant\\_of\\_Tourmalet](https://en.wikipedia.org/wiki/The_Giant_of_Tourmalet)

## 17 June – Saugué and Bué

We awoke to another bright morning and after a quiet pre-breakfast stroll set off to one of the nearest sites, the plateau at Saugué, where the journey is always productive and dramatic. This started with a diversion, over 'dipper bridge', as the usual bridge was closed for works. A curvy climb up steep roads through meadows and woodland eventually brought us to the Honeyguide named 'butterfly bridge'. There was a green hairstreak on the ground, and the first notable bird was an obliging red backed shrike. Roadside pools from streams and gullies gave soft moist ground for small clouds of butterflies - Grizzled skippers were joined by small blues and heath fritillaries, while on a rock by the stream a large green lizard was attempting to avoid attention. An oak orb web spider (photo, page 14) showed its distinctive oak-leaf pattern.

We eventually left the bridge and continued our journey to Saugué Plateau. Where the road ends a path continues and gives a superb view of the Cirque de Gavarnie. But first we climbed the hummock by the parking area where there were alpine asters and fragrant orchids.



Cirque de Gavarnie from Saugué (IN).

We walked toward the cirque alongside meadows with patches of horned violet, singing whinchats and corn buntings, and the sun brought out numerous Piedmont ringlets. A black-veined moth posed obligingly, painted lady and small tortoiseshell added to the mix and there was the sound of numerous calling quails, apparently very close but as usual, out of view – except for Nicky who disturbed two as she explored a small path in the meadow. As well as the quails' usual 'wet-my-lips' call, we could hear a more muffled sound. We eventually realised that this was an alternative quail sound, described on the Collins Birds Guide app as 'mau-wau'. Wall lizards crept out from the rocks and in a meadow two great spotted woodpeckers fed on the ground in a manner more typical of their Iberian cousins. In another field a marmot head kept appearing above the vegetation as it fed on the seed heads of plants.



Black-veined white moth, Saugué (CD); southern white admiral, Bué (IN).

Lunch was taken back at 'butterfly corner'. Here was a similar selection of butterflies as earlier, but we were treated to fine view of an Egyptian vulture and a bearded vulture moving through.

A short distance away was a café, often closed on previous visits, so we made use of the facilities and refreshment. We had calling quail as a backdrop and watched a helicopter carrying equipment to a distant field. Then there was a surprise when an old friend appeared: Gwenaëlle Plet, who used to work for LPO, in which capacity she would visit Honeyguide groups at the hotel to talk about LPO's work. Gwenaëlle is now an independent guide in the Pyrenees, and today she was driving a group of American students. We stopped for a chat, of course.

We turned left into the Bué valley – rather than right back to Gèdre – and drove up a gravel road to a roadworks sign blocking the road, some way below where we'd reached in previous years. From here, through the trees, you could look down on Gèdre, and everyone set off, at their own pace, to walk gently downhill, often in welcome shade, and back to the hotel. Southern white admirals showed well for many of the group. Chris and Ivan were at the back, and after a while we retraced our steps to collect the minibuses. We picked up two of the group on the descent, though most were back at base before us.

Last night we noticed a group of football enthusiasts from a French group at the hotel watching France beat Senegal in their opening world cup match, with occasional cries of 'Allez les Bleus!'. Tonight it was our turn, with several of us staying up late – along with Philippe from the hotel – to see England beat Croatia 4-2.

### 18 June – Col de Tentes & Ossoue Valley

Looking for wildlife in or from the hotel car park was our routine, with two especially good species today: a confiding tufted marbled skipper (photo on page 14), and a calling black woodpecker, in addition to the daily Iberian woodpecker.

The Col de Tentes is another high pass and a ski destination, reached from just beyond Gavarnie. The road ascends to 2200m through wide open meadows and glorious views, and ugly ski station architecture is quickly passed. Marmots were easy to see here, along with alpine chough and water pipits. A dunnock sang from bushes on the crags, a hedge accentor emulating his high altitude relative, the alpine accentor.

A stop at a small apparently insignificant stream revealed the area's riches. A marmot ran for cover in the rocks by the small bridge as we approached, eventually posing from his crevices in the rocks. Hilly slopes nearby had a small stream running between them providing conditions for butterworts, birdseye primrose and marsh marigold to flourish, while on slightly drier slopes spring and trumpet gentians provided vibrant colour among the grass. On the other side of the road, we went to see a beautiful small elephant hawkmoth that Nicky had found among low vegetation.



Birdseye primrose (IN); trumpet gentians (ED); small elephant hawkmoth (CD).

We continued to the top, a busy car park and the highest place we reached all week. We took a stroll along a well-made and flat path along the contour of the valley. Alpine chough, ravens and griffon

vultures kept us company. We checked several wall lizards and they were all common wall lizards. Flowers included alpine toadflax, paronychia and rock campion.

We descended the mountain and stopped for a coffee in the same café in Gavarnie as on Monday, before setting off to the nearby Ossoue valley. First stop was lunch at a convenient pull in beneath impressive cliffs at the head of the valley. Above us four griffons took patrol along with the occasional chough.

After lunch we explored more of the valley and drove down to where it widened out into a broad U-shaped valley. We stopped and explored by picking random parking areas based on whether they could hold two vehicles. Alongside one of the buses at one of these was a marmot hole, and soon the occupant decided to come and look at us watching him or her. Photographs were numerous ...



A confiding marmot in the Ossoue Valley (IN).

A red kite drifted over the crags, chased off by a peregrine; Everard found a beautiful burnt-tip orchid. Chris caught a butterfly, eventually identified as a silver-studded blue – rather than the almost identical Idas blue – with a glimpse of a tiny, diagnostic spur on the tibia of a foreleg.

Then it rained, and the rain briefly turned to hail. We had reached the end of the track, and the rain was our cue to retreat to Gèdre. A good day, just a little damp at the end.

A few in the group walked to Gèdre-Dessus (upper Gèdre) after we'd returned to the hotel, passing a choral group gathering in the village. Soon their voices were soaring to us as we added several plants to the checklist from a rather different habitat, species such as laserwort, sickle-leaved hare's-ear and large Mediterranean spurge, plus a transparent burnet moth (photo on page 14).

After dinner we headed to the river with new style bat detectors. These give an on-screen identification and consequently our mammal list grew. There were common and soprano pipistrelles as we expected but also Kuhl's pipistrelle, barbastelle, Daubenton's and Schreiber's bats also appeared on screens.

### **19 June – Gavarnie**

Having visited the town briefly already, today we returned to Gavarnie to walk towards the Cirque. We parked, as we had before, in the town's car park, using permits supplied by the hotel. Above us on the crags griffon vultures and alpine choughs took to the air, though today was quiet for birds overall and the ground drier than on previous visits. As well as the flower-filled meadows, small rockfaces were a

delight with livelong saxifrages, ferns and fairy foxglove in the crevices. Clouded apollo butterflies and the occasional swallowtail flew over the uncut fields, and Anne found a burnet companion moth. For a lucky few a Camberwell beauty gave a brief fly past, and Julian found a shiny *Carabus splendens* beetle. The farthest point for many of us was a group of pine trees where we tried and failed to find a crested tit, though there were greater butterfly orchids and some group members saw a patch of lily-of-the-valley. From here, three energetic members of the group, despite today's heat, headed farther up the valley. They were rewarded by finding that the high café was open for cold drinks, sorbets and a fabulous view of La Grande Cascade, the highest waterfall in France.

The rest of us retreated to a wonderful meadow set away from the main track. Having made our slight detour across the river, a crested tit finally made an appearance, along with several coal tits. The path took us to a meadow that is always rich and productive but this year especially so: hundreds of broad-leaved marsh orchids lined the streams, along with more greater butterfly orchids and many fragrant orchids, all against the magnificent backdrop of the cirque. Our attention was soon drawn to butterflies. A group was 'puddling', drawing minerals from a patch of damp ground, various skippers, numerous black-veined whites and the stars were three fabulous swallowtails drifting in and out of the group and settling among their more monochrome relatives.

Lunch was taken in some welcome shade. After this we pottered back along the track, stopping for the butterflies again and then set off along the path back to a café on the edge of town. Chris was pleased to find a clump of the unusual fern forked spleenwort. It was now mid-afternoon and the sun had stayed with us. Some bought souvenirs in Gavarnie and we met back at the minibuses, where a rabbit on the grass verge in the car park was a surprising new species to add to the list.

After dinner we went to Dipper Bridge and added northern bat to our tally.

### 20 June – Cirque de Troumouse

Again it was a calm and dry morning, though cooler than previous but fine for our final destination. One of the special sites for both its scenery and wildlife is the Cirque de Troumouse, located in the Pyrenees World Heritage Site and a short drive from the hotel. Our route followed the Héas river valley, past the turn for the Lac des Gloriettes and on and up into high pasture. Up here we stopped by the Auberge du Maillet, though not (yet) for coffee ... unlike our previous visits, it was now the end of the road for public vehicles. Here the view was not only spectacular but enhanced by isard, the Pyrenean chamois. A group of c11 adults and young were high on a small grass area on the slopes above us. Good views were had by all through the telescopes and, for some, the sight of the young gambolling on the grass. A highlight of the week for many.

The route to the cirque is now done on foot (for the hardy) or by the 'Petit Train', a land train pulled up the steep road by a tractor. This new development was done to protect the fragile environment of this UNESCO World Heritage Site. We learned all this and organised tickets in time for the 11 o'clock departure. The consensus was that was a great way to travel and was another highlight for some. The train took us to its turning and dropping place, much reduced from the former large car park.



Yes, it really happened: a Honeyguide group on 'petit train', at Troumouse (IN/CD).

The cirque here is huge with 3000m peaks forming the border with Spain. Crossing the meadows are several streams and there are pools and damp areas of grass, though some of smaller streams had dried up. We searched the first small stream with water and immediately found Pyrenean brook newts, lurking under rocks and overhangs in calmer patches of water. These cold meadow streams are the only place this animal is found, part of the unique nature of the area. Four-spotted chasers patrolled the edges of the stream, too, and a large red damselfly landed on Nicky's hand (photo, page 20).



Playing 'seek the Pyrenean brook newt' (IN), and here it is (JL).

Numerous paths cross the meadows to the scree of the cirque and a few of us took a quiet and calm route to the right, weaving among large boulders and patches of rock with monkshood leaves preparing for spectacular autumn flowering. Wheatears and water pipits accompanied us and seemed very numerous as they collected food for chicks. Our point for turning back was an outcrop of rocks before the path dropped down to the lake. Here we ate lunch and waited and watched the tops of the rocks for alpine accentor; they appeared to elude us until Denise, Ann and Val set off back when they heard a call and saw two birds on the rocks opposite.

Others in the group explored the plateau more slowly and enjoyed flowers including gentians, alpine forget-me-not, alpine calamint and sweetly-scented garland flower or rose daphne *Daphne cneorum*, plus, through the telescope, a large group of frolicking isards.

Back at the train 'station' most of us gathered for the 2pm descent to the Auberge du Maillet, a journey interrupted somewhat by stubborn sheep. By the time we'd organised drinks at the auberge – there was quite a queue – those on the 3pm 'train' found us. In the meantime, Ann showed us photos of a lizard she had seen around the bins and a later review at the hotel indicated it was a Pyrenean rock lizard, new for the week and often missed.

It was now very hot as we descended, stopping by a nice patch of vipers bugloss that provided nectar to swallowtails, hummingbird hawkmoths and clouded yellows. A purple-edged copper shone from a patch of flowers and Chris showed his skills with a butterfly net and caught a chequered skipper. It was now 31 degrees and getting warmer, and we headed back to base for our last review of the day and to collect highlights of the week.



Vipers bugloss with swallowtail (IN), hummingbird hawkmoth (IN) and chequered skipper (CD).

## 21 June – home

It was another dry morning, an early breakfast, and we were away by 08:15. Keen eyes on the journey back to the airport kept trying to add new birds and succeeded with a probable firecrest, jackdaws and numerous black kites. The drive took just an hour, plus a short stop to refuel our minibuses. Once the slow process through bag-drop was done it wasn't long before we were on the plane, just pausing at the top of the steps to the plane for a cattle egret spied by Anne. We returned safely and only a little late to Stansted.

Thank you for being a great group. Ivan & Chris

### The best bits

On the	final evening we collected holiday highlights, and here they are:
<b>Julian</b>	Sharing the fantastic vistas; picnic spots with this great group; the butterfly 'oases'; marmots and ring ousel.
<b>Nicky</b>	Marmots, views; nice company again.
<b>Jill</b>	Scenery, marmot, birdseye primroses and marsh marigolds at Col des Tentés
<b>Ann</b>	Scenery; assorted puddling butterflies; close-up marmot.
<b>Val</b>	Scenery, chuffed to see choughs; lovely company.
<b>Denise</b>	Spectacular scenery & good weather; marmot in burrow; isards.
<b>Anne</b>	Scenery and flowers; baby isards in snow; wheatears; gentians.
<b>Daphne</b>	Spectacular landscape; gentians; isards.
<b>Fiona</b>	Amazing plants including gentians; butterworts & nailwort; butterflies puddling & close swallowtails; little train; food & company.
<b>Megan</b>	Scenery especially cirques; variety of species; butterflies & marmots.
<b>Dawn</b>	Loved whole week; scenery; the group; sharing the knowledge; Tourmalet with bearded vultures & snowfinches as we turned up.
<b>Kathy</b>	Marmots; chamois; Pyrenean brook newt; small elephant hawkmoth.
<b>Steve</b>	Mountain scenery
<b>Everard</b>	Mountain scenery; alpenrose; bearded vultures; chamois.
<b>Ivan</b>	Swallowtails; 'flying marmots'; scenery / place.
<b>Chris</b>	Butterfly clusters; ring ousel; 'petit train', a first for Honeyguide; young isards' back somersaults.



A highlight for Everard: alpenrose, plus sweetly-scented garland flower or rose daphne (ED)

### Wildlife lists

BIRDS	
<b>Grey heron</b>	Flying across the valley at Gèdre on two evenings
<b>Little egret</b>	On route to airport
<b>Cattle egret</b>	In grass by the runway at airport
<b>Black kite</b>	Many seen on route from the airport, and on 18/6
<b>Red kite</b>	Seen daily, on route as we got into higher ground and at Gèdre
<b>Bearded vulture</b>	Adults seen well at Tourmalet and Saugué, fewer sightings than previous years
<b>Griffon vulture</b>	Seen daily
<b>Egyptian vulture</b>	Seen on two days
<b>Short-toed eagle</b>	Two hunting above Gèdre, seen on four occasions

<b>Common buzzard</b>	Seen on most days
<b>Kestrel</b>	Seen most days
<b>Peregrine</b>	Just one sighting, Ossoue Valley
<b>Quail</b>	Heard at Saugué and Ossoue valleys
<b>Feral pigeon</b>	At Gavarnie
<b>Woodpigeon</b>	Seen on two days
<b>Collared dove</b>	At lower altitudes
<b>Cuckoo</b>	Heard at Gavarnie
<b>Swift</b>	Recorded on the first two days only
<b>Iberian woodpecker</b>	Seen and heard in daily in Gèdre, heard at Saugué
<b>Black woodpecker</b>	Heard from the hotel car park, 18/6.
<b>Great spotted woodpecker</b>	Heard and seen near the hotel, two birds feeding on the ground at Saugué.
<b>Skylark</b>	Heard at Saugué only
<b>House martin</b>	Alongside crag martins in Gèdre
<b>Crag martin</b>	Seen daily; nesting in Gèdre
<b>Swallow</b>	Seen only on days 1 and 3
<b>Tree pipit</b>	Singing at Saugué and seen at Gavarnie
<b>Meadow pipit</b>	Heard on 2 days, at higher altitudes
<b>Water pipit</b>	At all the higher altitude stops, feeding in snowmelt and wet areas of pasture
<b>Grey wagtail</b>	Gèdre, Gavarnie
<b>White wagtail</b>	Seen daily, and regular in Gèdre
<b>Dipper</b>	Gèdre and Gavarnie
<b>Wren</b>	Heard or seen daily
<b>Duncock</b>	Around Gèdre, several in Val d'Estaubé
<b>Alpine accentor</b>	Two males singing at Cirque de Troumouse
<b>Robin</b>	Heard or seen daily
<b>Black redstart</b>	Daily in Gèdre and at most locations
<b>Whinchat</b>	Saugué and Lac des Gloriettes
<b>Northern wheatear</b>	At all the high altitude stops
<b>Ring ouzel</b>	Lac des Gloriettes
<b>Blackbird</b>	Daily in Gèdre.
<b>Song thrush</b>	Heard around Gèdre every day
<b>Mistle thrush</b>	In the Glère valley near Chez Louisiette and 2 other days
<b>Blackcap</b>	Heard daily, seen opposite the hotel
<b>Whitethroat</b>	Gavarnie
<b>Garden warbler</b>	Heard and seen in Gavarnie valley, and near the hotel
<b>Northern chiffchaff</b>	Heard daily; singing in the meadow area in the Gavarnie valley
<b>Firecrest</b>	Heard on two days, including in the hotel car park
<b>Long-tailed tit</b>	15/6 only
<b>Great tit</b>	Recorded almost every day
<b>Blue tit</b>	Gèdre, Saugué
<b>Coal tit</b>	In the pine woods at Gavarnie and at Gèdre-Dessus
<b>Crested tit</b>	Gavarnie near the meadow
<b>Nuthatch</b>	At Gèdre
<b>Short-toed treecreeper</b>	Heard on two days.
<b>Red-backed shrike</b>	A male at Lac des Gloriettes and 'butterfly bridge' in Saugué Valley
<b>Jay</b>	Seen on most days
<b>Magpie</b>	Seen at several locations
<b>Raven</b>	Frequent over Gèdre and at most stops
<b>Carrion crow</b>	Gavarnie, Gèdre, not often seen
<b>Red-billed chough</b>	At Saugué, Gloriettes, Gavarnie
<b>Alpine chough</b>	Flocks at Saugué, Val d'Estaubé, Lac des Gloriettes
<b>Jackdaw</b>	On the way to Lourdes
<b>Chaffinch</b>	Seen daily.
<b>Linnnet</b>	Saugué, Ossoue
<b>Serin</b>	Heard or seen daily, especially in Gèdre.
<b>Snowfinch</b>	Display at Col du Tourmalet near the café at the top
<b>House sparrow</b>	Seen daily, especially in Gèdre
<b>Yellowhammer</b>	Saugué, recorded on 4 days

## MAMMALS RK = roadkill

Alpine marmot

Red squirrel

Rabbit

Isard (Pyrenean chamois)

Hedgehog RK

*Bats recorded on Echo bat meters*

Pipistrelle

Soprano pipistrelle

Kuhl's pipistrelle

Savi's pipistrelle

Daubenton's bat

Barbastelle

Northern bat

Noctule

Schreiber's bat (=common bentwing)

## AMPHIBIANS and REPTILES

Common frog

Pyrenean brook newt

Common wall lizard

Pyrenean rock lizard

Green lizard

Southern smooth snake RK

Grass snake

Asp viper

## BUTTERFLIES

Swallowtail

Apollo

Clouded Apollo

Red admiral

Painted lady

Small tortoiseshell

Southern white admiral

Camberwell beauty

Comma

Pearl-bordered fritillary

Heath fritillary

False heath fritillary

Queen-of-Spain fritillary

Meadow brown

Large wall brown

Piedmont ringlet

Small heath

Pearly heath

Speckled wood

Marbled white

Large white

Small white

Orange tip

Black-veined white

Brimstone

Common blue

Adonis blue

Silver-studded blue

Small blue

Holly blue

Purple-edged copper

Green hairstreak

Brown argus

Dingy skipper

Grizzled skipper

Oberthur's grizzled skipper

Alpine grizzled skipper

Essex skipper

Tufted marbled skipper

Chequered skipper

## MOTHS

*Metaxmeste phrygialis*

Small magpie

Forester moth sp

5-spot burnet

Transparent burnet

Cinnabar

Chimney sweeper

Yellow shell

Small argent & sable

Hummingbird hawk-moth

Small elephant hawk-moth

Black-veined moth

Burnet companion

White plume moth

Garden tiger (caterpillar)

Mullein moth (caterpillar)

## ODONATA

*Libellula depressa* broad-bodied chaser

*L. quadrimaculata* four-spotted chaser

*Orthetrum coerulescens* keeled skimmer

*Calopteryx virgo* beautiful demoiselle

*Enallagma cyathigerum* common blue damselfly

*Pyrrhosoma nymphula* large red damselfly

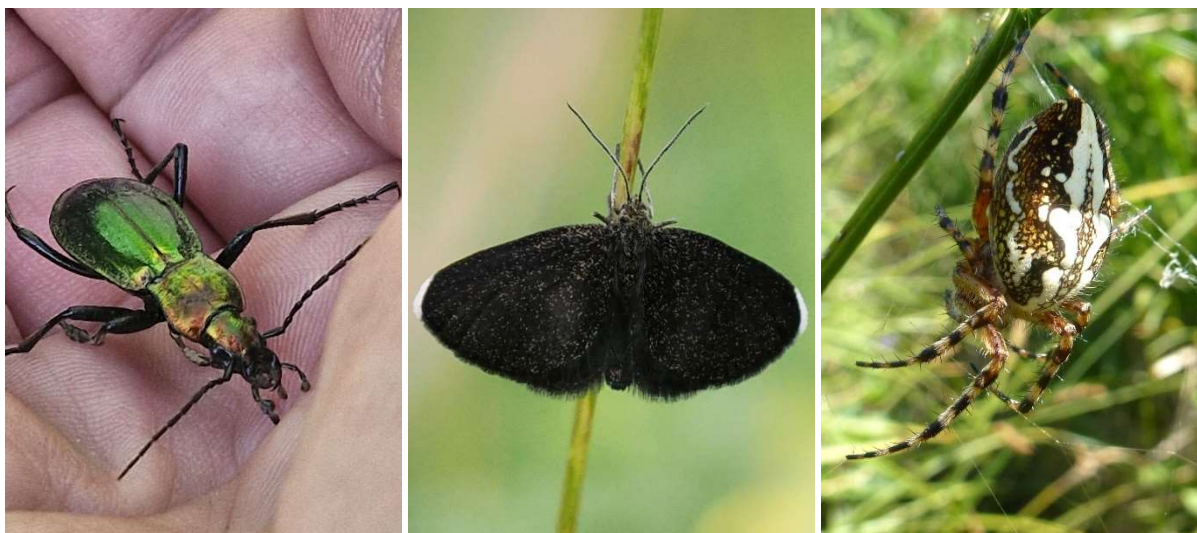
## OTHER INVERTEBRATES

*Cepaea nemoralis* banded snail

*Helix aspersa* garden snail

*Salticus scenicus* zebra spider

<i>Aculepeira ceropegia</i>	oak orb web spider
<i>Agelenidae</i>	funnelweb spider sp
<i>Gryllus campestris</i>	field cricket
<i>Lygaeus equestris</i>	a ground bug
<i>Libelloides coccajus</i>	an ascalaphid or owl-fly
<i>Panorpa</i> sp	scorpion-fly
<i>Molobratia teutonius</i>	robber fly
<i>Eurydema oleracea</i>	Red cabbage or brassica bug
<i>Graphosoma italicum</i>	Italian shield bug
<i>Carabus splendens</i>	a green ground beetle
<i>Cetonia aurata</i>	rose chafer
<i>Trichius fasciatus</i>	bee chafer
<i>Cicindela campestris</i>	green tiger-beetle
<i>Coccinella 7-punctata</i>	7-spot ladybird
<i>Chrysolina fastuosa</i>	dead-nettle leaf beetle
<i>Lixus iridus</i>	a weevil
<i>Phyllopertha horticola</i>	garden chafer
<i>Lytta vesicatoria</i>	Spanish-fly
<i>Polistes</i> sp.	a paper wasp
<i>Vespa crabro</i>	hornet
<i>Bombus pascuorum</i>	common carder-bee
<i>Volucella bombylans</i>	hoverfly, bee mimic
<i>Sphaerophoria scripta</i>	common globetail. hoverfly
<i>Exoprosopa capucina</i>	a picture-wing bee-fly
<i>Formica rufa</i>	wood ant
<i>Tipula maxima</i>	giant cranefly
Cf <i>Dinocras cephalotes</i>	stonefly
<i>Gerris</i> sp (probably)	pond skater



*Carabus splendens* (JL); chimney sweeper moth (IN); oak orb web spider (CD).



Transparent burnet on small scabious; tufted marbled skipper (CD).

## FLOWERING PLANTS

(some widespread and familiar species are omitted)

<b>Dicotyledons</b>	
Aceraceae	
<i>Acer campestre</i>	Field maple
<i>A. pseudoplatanus</i>	Sycamore
Apiaceae	
<i>Arnica montana</i>	Arnica
<i>Aegopodium podagraria</i>	Ground elder
<i>Bupleurum falcatum</i>	Sickle-leaved hare's-ear
<i>Conopodium pyrenaicum</i>	Pyrenean pignut
<i>Daucus carota</i>	Wild carrot
<i>Eryngium bourgatii</i>	Pyrenean eryngo
<i>Heracleum sphondylium</i> ssp. <i>pyrenaicum</i>	Hogweed
<i>Laserpitium siler</i>	Laserwort, a sermountain
<i>Laserpitium latifolium</i>	Broad-leaved sermountain
<i>Meum athamanticum</i>	Spignel
<i>Myrrhis odorata</i>	Sweet cicely
Asclepiadaceae	
<i>Vincetoxicum hirundinaria</i>	Swallow-wort
Asteraceae	
<i>Achilla millefolia</i>	Yarrow
<i>Antennaria dioica</i>	Cat's-foot
<i>Aster alpinus</i>	Alpine aster
<i>Bellis perennis</i>	Daisy
<i>Carduus carlinoides</i>	Pyrenean thistle
<i>Carlina acanthifolia</i>	Cardabelle (= acanthus-leaved carline thistle)
<i>Centaurea nigra</i>	Black knapweed
<i>Cirsium eriophorum</i>	Woolly thistle
<i>C. rivulare</i>	Brook thistle
<i>C. palustre</i>	Marsh thistle
<i>Crepis pygmaea</i>	Pygmy hawksbeard NiF
<i>Hieracium murorum</i>	Wall hawkweed
<i>H. pilosella</i>	Mouse-ear hawkweed
<i>Lactuca serriola</i>	Prickly lettuce
<i>Leucanthemum</i> (or <i>Tanacetum</i> ) <i>corymbosum</i>	like a many-headed ox-eye daisy
<i>L. vulgare</i> (+ ssp. <i>montanum</i> )	Ox-eye daisy
<i>Mycelis muralis</i>	Wall lettuce
<i>Petasites albus</i>	White butterbur
<i>Solidago virgaurea</i>	Golden-rod
<i>Tragopogon pratensis</i>	Goat's-beard
<i>Tussilago farfara</i>	Colt's-foot
Betulaceae	
<i>Betula pendula</i>	Silver birch
Boraginaceae	
<i>Echium vulgare</i>	Viper's-bugloss
<i>Myosotis alpina</i>	Alpine forget-me-not
<i>Pulmonaria officinalis</i>	Lungwort
Brassicaceae	
<i>Arabis recta</i>	Annual rockcress
<i>Cardamine raphanifolia</i>	Radish-leaved bittercress = greater cuckoo flower
<i>Erysimum decumbens</i>	a treacle-mustard
<i>Fibigia clypeata</i>	'Roman shields' very silvery hairy, big oval pods, at Gèdre-Dessus
<i>Hutchinsia alpina</i>	Chamois cress
<i>Sisymbrium austriacum</i>	Austrian rocket
Buxaceae	
<i>Buxus sempervirens</i>	Box
Campanulaceae	
<i>Campanula glomerata</i>	Clustered bellflower
<i>C. rotundifolia</i>	Harebell
<i>C. trachelium</i>	Nettle-leaved bellflower
<i>Jasione montana</i>	Sheep's-bit
<i>Phyteuma orbiculare</i>	Round-headed rampion
<i>P. pyrenaicum</i>	a spiked rampion with slaty blue flowers

Caprifoliaceae	
<i>Lonicera pyrenaicum</i>	Pyrenean honeysuckle
<i>Sambucus ebulus</i>	Dwarf elder
<i>S. nigra</i>	Elder
<i>S. racemosa</i>	Alpine elder NiF
Caryophyllaceae	
<i>Arenaria serpyllifolia</i>	Thyme-leaved sandwort
<i>Cerastium alpinum</i>	
<i>Dianthus deltoides</i>	Maiden pink
<i>D. monspessulanus</i>	Fringed pink
<i>Gypsophila repens</i>	Alpine gypsophila or creeping baby's breath
<i>Lychnis alpina</i>	Alpine catchfly
<i>Paronychia kapela</i>	Nailwort
<i>Silene acaulis</i>	
<i>S. alba</i>	White campion
<i>S. dioica</i>	Red campion
<i>S. nutans</i>	Nottingham catchfly
<i>S. rupestris</i>	Rock campion
<i>S. vulgaris</i>	Bladder campion
<i>Spergularia rubra</i>	Sand spurrey
<i>Stellaria holostea</i>	Greater stitchwort
Chenopodiaceae	
<i>Chenopodium album</i>	Fat hen
<i>Chenopodium bonus-henricus</i>	Good King Henry
Cistaceae	
<i>Helianthemum apenninum</i>	White rock-rose
<i>H. canum</i>	Hoary rock-rose
<i>H. nummularium</i>	Common rock-rose
Clusiaceae (Hypericaceae)	
<i>Hypericum perforatum</i>	Perforate St. John's-wort
Corylaceae	
<i>Corylus avellana</i>	Hazel
Crassulaceae	
<i>Sedum acre</i>	
<i>S. album</i>	White stonecrop
<i>S. anglicum</i>	English stonecrop
<i>S. dasyphyllum</i>	Thick-leaved stonecrop
<i>Sempervivum montanum</i>	Mountain houseleek
<i>Umbilicus rupestris</i>	Navelwort
Cuscutaceae	
<i>Cuscuta epithymum</i>	Dodder
Dipsacaceae	
<i>Knautia dipsacifolia</i>	Wood scabious
<i>Scabiosa columbaria</i>	Small scabious
Droseraceae	
<i>Drosera rotundifolia</i>	Round-leaved sundew
Ericaceae	
<i>Arctostaphylos uva-ursi</i>	Bearberry
<i>Calluna vulgaris</i>	Heather
<i>Rhododendron ferrugineum</i>	Alpenrose
Euphorbiaceae	
<i>Euphorbia amygdaloides</i>	
<i>E. characias</i>	Large Mediterranean spurge
<i>E. cyparissias</i>	Cypress spurge
Fabaceae	
<i>Astragalus alpinus</i>	Alpine milk-vetch
<i>Anthyllis vulneraria</i>	Kidney vetch
<i>Lathyrus montanus</i>	
<i>L. pratensis</i>	Meadow vetchling
<i>Lotus (corniculatus) alpinus</i>	Alpine birdsfoot-trefoil
<i>L. corniculatus</i>	Birdsfoot-trefoil
<i>Medicago sativa</i>	Lucerne (=alfalfa)
<i>Melilotus albus</i>	White melilot
<i>Ononis natrix</i>	
<i>O. rotundifolia</i>	Round-leaved restharrow
<i>O. spinosa</i>	Spiny rest-harrow
<i>Robinia pseudacacia</i>	False acacia

<i>Trifolium alpinum</i>	Alpine clover
<i>T. dubium</i>	Lesser trefoil
<i>T. montanum</i>	Mountain clover
<i>T. ochroleucon</i>	Sulphur clover
<i>T. pratense</i>	Red clover
<i>T. repens</i>	White clover
<i>Vicia cracca</i>	Tufted vetch
<i>V. pyrenaica</i>	Pyrenean vetch
<i>V. sepium</i>	Bush vetch
Fagaceae	
<i>Fagus sylvatica</i>	Beech
<i>Quercus pubescens</i>	Downy/white oak
Gentianaceae	
<i>Gentiana acaulis</i>	Trumpet gentian
<i>G. verna</i>	Spring gentian
Geraniaceae	
<i>Geranium cinereum</i>	Ashy cranesbill
<i>G. molle</i>	Dovesfoot cranesbill
<i>G. phaeum</i>	Dusky cranesbill
<i>G. purpureum</i>	Little robin
<i>G. pyrenaicum</i>	Pyrenean cranesbill
<i>G. robertianum</i>	Herb Robert
<i>G. sylvaticum</i>	Wood cranesbill
Gesneriaceae	
<i>Ramonda myconi</i>	Ramonda
Globulariaceae	
<i>Globularia nudicaulis</i>	Leafless-stemmed globularia
<i>G. repens</i>	Creeping globularia
Lamiaceae	
<i>Acinos alpinus</i>	Alpine calamint
<i>Ajuga reptans</i>	Bugle
<i>Galeopsis pyrenaica</i>	Pyrenean hemp-nettle
<i>Lamiaeum galaeobdolon</i>	Yellow archangel
<i>Lamium maculatum</i>	Spotted dead-nettle
<i>L. purpureum</i>	Red dead-nettle
<i>Mentha longifolia</i>	Horse mint
<i>Salvia verbenaca</i>	Wild clary
<i>Stachys recta</i>	Yellow woundwort
<i>Teucrium pyrenaicum</i>	Pyrenean germander
<i>T. scorodonia</i>	Wood sage
<i>Thymus serpyllum</i>	Wild thyme
Lentibulariaceae	
<i>Pinguicula grandiflora</i>	Large-flowered butterwort
Linaceae	
<i>Linum catharticum</i>	Purging (= fairy) flax
Loranthaceae	
<i>Viscum album</i>	Mistletoe
Malvaceae	
<i>Malva moschata</i>	Musk mallow
<i>M. neglecta</i>	Dwarf mallow
<i>M. sylvestris</i>	Common mallow
Oleaceae	
<i>Fraxinus excelsior</i>	Ash
Onagraceae	
<i>Epilobium anagallidifolium</i>	Alpine (=pimpernel-leaved) willowherb
Orobanchaceae	
<i>Orobanche lutea</i>	Yellow broomrape
Oxalidaceae	
<i>Oxalis acetosella</i>	Wood-sorrel NiF
Papaveraceae	
<i>Chelidonium majus</i>	Greater celandine
<i>Meconopsis cambrica</i>	Welsh poppy
<i>Papaver rhoeas</i>	Common poppy
Plantaginaceae	
<i>Plantago alpina</i>	
<i>P. media</i>	Hoary plantain

Plumbaginaceae	
<i>Armeria maritima</i> ssp. <i>alpina</i>	Mountain thrift
Polygalaceae	
<i>Polygala</i> sp	milkwort
Polygonaceae	
<i>Rumex acetosa</i>	Common sorrel
<i>R. crispus</i>	Curled dock
<i>R. scutatus</i>	French sorrel (= Rubble dock)
Primulaceae	
<i>Androsace (carnea) laggeri</i>	Pink rock-jasmine
<i>Lysimachia nemorum</i>	Yellow pimpernel
<i>Primula elatior</i>	Oxlip NiF
<i>P. farinosa</i>	Birdseye primrose
<i>P. integrifolia</i>	Entire-leaved primrose
<i>P. veris</i>	Cowslip NiF
Ranunculaceae	
<i>Aconitum napellus</i>	Monkshood NiF
<i>Aquilegia vulgaris</i>	Columbine
<i>Caltha palustris</i>	Marsh marigold
<i>Clematis vitalba</i>	Traveller's-joy
<i>Helleborus foetidus</i>	Stinking hellebore
<i>Hepatica nobilis</i>	Hepatica NiF
<i>Ranunculus acris</i>	Meadow buttercup
<i>R. bulbosus</i>	Bulbous buttercup
<i>Thalictrum aquilegifolium</i>	Great meadow-rue
<i>Trollius europeaeus</i>	Globe-flower
Resedaceae	
<i>Reseda lutea</i>	Wild mignonette
<i>R. glauca</i>	Pyrenean mignonette
Rosaceae	
<i>Alchemilla alpina</i>	Alpine lady's-mantle
<i>Amelanchier ovalis</i>	Snowy Mespilus NiF
<i>Filipendula ulmaria</i>	Meadowsweet
<i>Fragaria</i> sp	Wild strawberry
<i>Geum montanum</i>	Alpine avens
<i>G. urbanum</i>	Wood avens or herb bennett
<i>Potentilla erecta</i>	Tormentil
<i>P. repens</i>	creeping cinquefoil
<i>P. montana</i>	a white cinquefoil
<i>Prunus mahaleb</i>	St Lucie's cherry
<i>Rosa canina</i>	Dog rose
<i>R. glauca</i>	Blue-leaved rose
<i>Rubus fruticosus</i>	Blackberry/bramble
<i>R. idaeus</i>	Raspberry
<i>Sanguisorba minor</i>	Salad burnet
<i>Sorbus aria</i>	Whitebeam
Rubiaceae	
<i>Asperula hirta</i>	a squinancywort
<i>Cruciata laevipes</i>	Crosswort
<i>Galium (mollugo) album</i>	Upright hedge bedstraw
<i>G. aparine</i>	Goosegrass
<i>G. pyrenaicum</i>	A cushion bedstraw
<i>G. odoratum</i>	Woodruff NiF
<i>G. verum</i>	Lady's bedstraw
Salicaceae	
<i>Populus tremula</i>	Aspen
Saxifragaceae	
<i>Saxifraga exarata</i>	Musky saxifrage
<i>S. longifolia</i>	Pyrenean saxifrage NiF
<i>S. paniculata</i>	Livelong saxifrage
<i>S. umbrosa</i>	Wood saxifrage
Scrophulariaceae	
<i>Cymbalaria muralis</i>	Ivy-leaved toadflax
<i>Digitalis lutea</i>	Small yellow foxglove
<i>Erinus alpinus</i>	Fairy foxglove
<i>Euphrasia</i> sp	Eyebright
<i>Linaria alpina</i>	Alpine toadflax

<i>Pedicularis</i> sp	lousewort
<i>Scrophularia canina</i>	Alpine (= French) figwort
<i>S. pyrenaica</i>	Pyrenean figwort
<i>Rhinanthus minor</i>	Yellow-rattle
<i>Verbascum nigrum</i>	Dark mullein
<i>V. pulverentum</i>	Hoary mullein
<i>Veronica beccabunga</i>	Brooklime
<i>V. chaeaedrys</i>	Germander speedwell
<i>V. fruticans</i>	Rock speedwell
<i>V. nummularia</i>	Pyrenean speedwell
<i>V. serpyllifolia</i>	Thyme-leaved speedwell
Solanaceae	
<i>Solanum dulcamara</i>	Bittersweet or woody nightshade
Thymelaeaceae	
<i>Daphne cneorum</i>	Garland flower or rose daphne
<i>D. mezereum</i>	Mezereon
Tiliaceae	
<i>Tilia platyphyllos</i>	Large-leaved lime
Valerianaceae	
<i>Centranthus ruber</i>	Red valerian
<i>Valeriana pyrenaica</i>	Pyrenean valerian
Verbenaceae	
<i>Verbena officianalis</i>	Vervain
Violaceae	
<i>Viola cornuta</i>	Horned pansy
<b>Monocotyledons</b>	
Cyperaceae	
<i>Eriophorum angustifolium</i>	Cotton-grass
Dioscoreaceae	
<i>Tamus communis</i>	Black bryony
Iridaceae	
<i>Iris latifolia</i>	English iris
Liliaceae	
<i>Anthericum liliago</i>	St Bernard's lily
<i>Asphodelus albus</i>	Asphodel
<i>Convallaria majalis</i>	Lily-of-the-valley NiF
<i>Hyacinthus amethystinus</i>	Pyrenean hyacinth
<i>Lilium martagon</i>	Martagon lily
<i>Tofieldia calyculata</i>	Tofield's asphodel
Orchidaceae	
<i>Anacamptis pyramidalis</i>	Pyramidal orchid
<i>Dactylorhiza fuchsii</i>	Common spotted-orchid
<i>D. maculata</i>	Heath spotted-orchid
<i>D. majalis</i> ssp. <i>alpestris</i>	Broad-leaved marsh-orchid
<i>D. sambucina</i>	Elder-flowered orchid ( <i>gone over</i> )
<i>Epipactis helleborine</i>	Broad-leaved helleborine
<i>Gymnadenia conopsea</i>	Fragrant orchid
<i>Listera ovata</i>	Common twayblade
<i>Nigritella nigra</i>	Black vanilla orchid
<i>Orchis ustulata</i>	Burnt-tip orchid
<i>Platanthera chlorantha</i>	Greater butterfly-orchid
Poaceae (very incomplete)	
<i>Briza media</i>	Quaking-grass
CONIFERS	
<i>Abies alba</i>	Silver fir
<i>Larix decidua</i>	European larch
<i>Pinus sylvestris</i>	Scots pine
<i>Juniperus communis</i>	Juniper
FERNS	
<i>Asplenium adiantum-nigrum</i>	Black spleenwort
<i>A. ruta-muraria</i>	Wall-rue
<i>A. scolopendrium</i>	Hartstongue Fern
<i>A. septentrionale</i>	Forked spleenwort
<i>A. trichomanes</i>	Maidenhair spleenwort
<i>Ceterach officinarum</i>	Rusty-back fern
<i>Polypodium vulgare</i>	Common polypody
<i>Pteridium aquilinum</i>	Bracken

**LICHENS**

*Xanthoria parietina*, Sunburst lichen

**FUNGI**

*Polyporus squamosus*, Dryad's saddle

*Albugo candida*, White rust on mistletoe

**GALLS**

Lime nail gall, gall mite *Eriophyes tiliae*

Walnut gall mite *Aceria erinea*



Greater butterfly orchid, on which you can see its diverging (not parallel) pollen masses (ED); burnt-tip orchid; asphodel with rose chafers (CD).



Puddling butterflies, various species (IN); black-veined white on small scabious (ED).



Bee chafer on swallow-wort; large red damselfly (CD)